



Coulston Church of England Primary School

Year 3



What staff are in the class?

Teacher:
Mrs. Patel

Teaching Assistants :

Mrs. Webb

Miss. Earl



Staff when Mr. Edwards is on Planning, Preparation and Assessment (PPA)

Mr Lampard will teach Physical Education (P.E.).

Mrs. Patel will teach Spanish.

Mr. Holland will teach Music.



How to contact the class teacher.

- ❑ Speak one-to-one at pick up or drop off times.
- ❑ Contact the office and they will pass on the message. This can be done in person, on the phone or via email.
- ❑ Write in your child's reading record. This will be checked daily.



What the pupils need to bring in everyday.

Please ensure that everyday pupils bring in their:

- School bag.
- Water Bottle.
- Coat.
- Jumper
- Reading Record, book and bookmark.

Year 3 Behaviour Expectations

In class we will be using a behaviour ladder to try and reinforce the correct behaviours in class.

It is similar to the image on the left.

We hope that the children demonstrates the Fruits of the Holy Spirit.





Fruits of the Holy Spirit





Homework

Each day please read with your child and log it in the reading record book. Each pupil has a bookmark that has reading comprehension style questions which will help them with their reading.


To complete a minimal of 30 minutes on Spelling Shed to help them with their weekly spellings. These will be set on Monday and tested on a Friday.


To complete 30 minutes a week on a Maths activity that will be set on a Monday and be due the following Monday.

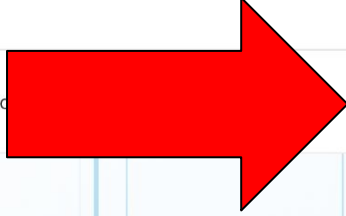
Additionally, your child will need to do 10 minutes of Times Table Rockstars a week.




How to access Spelling Shed?


EdShed  QUIZSHED SpellingShed PhonicsShed MathShed LITERACY SHED+ LITERACY SHED

Spelling Shed 



[Play Game](#)

[Sign In](#) 



 [About](#) [Word Lists](#) [Leagues](#) [Pricing](#) [Store](#)

The Science of Spelling!

The proven spelling scheme with spelling games enjoyed by millions of learners worldwide!

[Start Free Trial! >](#)

Already have an account? [Login now](#)





How to access Spelling Shed?

EdShed QUIZSHED SpellingShed PhonicsShed MathShed LITERACY SHED+ LITERACY SHED

Play Game



About Careers Store Get a Quote Ambassador Webinars Blog Training Help

Create Account

Sign In

Create Account

Sign In

QR Sign In

School Username



If you have a newer "School Username" please click the tab above.
Older / existing / adult logins will use this form.

Global Username or Email Address

~

Password

Your password

[Forgotten Password?](#)

Sign In

Or

Sign in with MyLogin

Wonde Sign In

Log in with Clever

School Passport Sian In

OneClick Sian In

Sian in with Snapplify



How to access Spelling Shed?

EdShed QUIZSHED SpellingShed PhonicsShed MathShed LITERACY SHED+ LITERACY SHED

Play Game



About

Careers

Store

Get a Quote

Ambassador

Webinars

Blog

Training

Help

Create Account

Sign In

Create Account

Sign In

QR Sign In

Global Username / Email

School Username



Only use this form if you are a pupil with a school # on your login slip.

School (search by name, id or postcode)

Coulston C of E Primary School

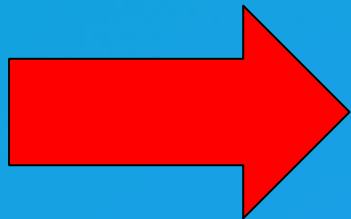
School Username

e.g. APeterson32

Password

Your password

Sign In





How to support your child

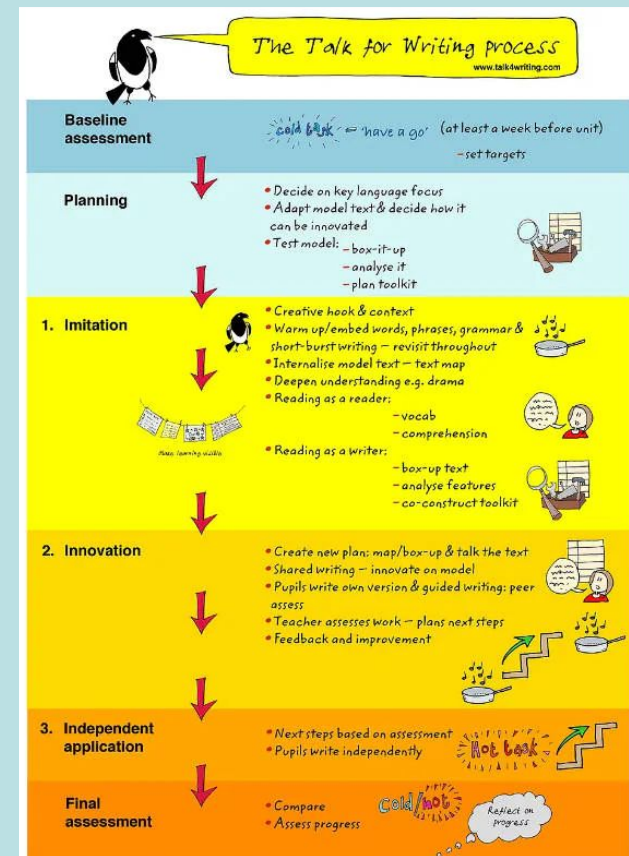
- Encouragement to do their homework independently.
- Go through the homework after and help them with their mistakes.
- Read daily with your child. They can read anything. It can benefit the child if they repeat the same text on numerous occasions.
- Promoting mental maths in daily activities. For example:
 - Can they help weigh the flour for a apple crumble?
 - How much change will I get from a £10 note?
- Do daily handwriting practice.
- Promote writing stories at home.



The Year 3 Curriculum

As a school, we will be teaching all subjects that is expected in the national curriculum. These subjects include English, Maths, R.E., Science, PSHE, Geography, History and Art.

As a school, we use a scheme called Talk for Writing. This will include a cold task to check what skills the pupils have and at the end of the unit a hot task to see what skills the pupils have learnt.





The Year 3 Curriculum

For Maths, we will be using the White Rose Maths scheme to enable our students to get a mastery of Maths. Here is the topics that will be covered each term.

	Week 1	Week 2	Week 3	Week 4	Week 5	Week 6	Week 7	Week 8	Week 9	Week 10	Week 11	Week 12
Autumn term	Place value VIEW		Addition and subtraction VIEW				Multiplication and division A VIEW					
Spring term	<small>Number</small> Multiplication and division B		<small>Measurement</small> Length and perimeter			<small>Number</small> Fractions A			<small>Measurement</small> Mass and capacity			
Summer term	<small>Number</small> Fractions B VIEW	<small>Measurement</small> Money VIEW	<small>Measurement</small> Time VIEW			<small>Geometry</small> Shape VIEW	Statistics VIEW		Consolidation			



The Year 3 Curriculum

In R.E. we will use the Southwark Diocesan Syllabus for Religious Education. These will be the topics covered.

	Autumn Term 1	Autumn Term 2		Spring Term 1	Spring Term 2		Summer Term 1	Summer Term 2
Year 3	What is the Bible's 'Big story'?	What are the Beatitudes and what do they mean for Christians?	How do advent and epiphany show us what Christmas is really about?	What does it mean to be a Muslim?	Wisdom	Easter People - Who is the most important person in the Easter story?	What does it mean to be a Jew?	How Does Worship and Liturgy Enable a Christian To Grow and Express Their Faith?



The Year 3 Curriculum

We will use the following themes for our History, Geography and Art lessons.

Autumn Term

Through the Ages.



This project teaches children about British prehistory from the Stone Age to the Iron Age.

Spring Term

Rocks, Relics and Rumbles



This project teaches children about the features and characteristics of Earth's layers, including a detailed exploration of volcanic, tectonic and seismic activity.

Summer Term

Emperors and Empires



This project teaches children about the history and structure of ancient Rome and the Roman Empire, including a detailed exploration of the Romanisation of Britain.



Our school trip this year

This will be confirmed later in the year and you will be notified well in advance. It will be based around one of our topics that is covered in the year.



SCHOOL TRIPS

The results of a school trip

We believe that educational visits are an integral part of the curriculum and learning experience for every child. The benefits to pupils of taking part in visits and learning outside the classroom include, but are not limited to:

- ❑ Increased critical curiosity and resilience.
- ❑ Increased levels of trust and opportunities and to examine the concept of trust (us in them, them in us, them in themselves, them in each other) giving opportunities for genuine teamwork.
- ❑ Enhanced opportunities for 'real world' 'learning in context' and the development of the social and emotional aspects of intelligence.
- ❑ Improved environmental appreciation, knowledge, awareness and understanding of a variety of environments.
- ❑ Physical skill acquisition and the development of a fit and healthy lifestyle. Our priority at Coulsdon is to ensure that all visits are Safe, Educational and Enjoyable!

Whilst we endeavour to keep costs to a minimum, many of these visits incur costs. We aim to give you ample time to pay for these trips – if costs are not met trips may have to be cancelled. If you have worries or concerns regarding any trip payment please speak to the office in complete confidence.



P.E. days

P.E. every week will be on a Tuesday and a Thursday.

Please can you ensure that the pupils are wearing their P.E. uniform.

On these days, please can you ensure that the pupils also have a jumper on.



Healthy Schools



- The school is keen to promote their emphasis on keeping healthy.
- We have a new rule that children are not allowed to bring in cakes or sweets on their birthdays.
- Pack lunches should not consist of sugary items e.g. chocolate bars.
- We are a nut free school!
- Water is available in school throughout the day. Could all pupils please have a drinks bottle with them and these will be kept on their desks.
- Biscuits- plain and without milk if possible due to intolerances and allergies



Partnership

- Parents / Children and School. This partnership is important for a child's development.
- Inform me of any changes e.g. bereavement, hospitalisation, separation, intolerances etc.
- Medical and dietary information- Ensure it is accurate and up to date.
- .
- Concerns- Come and see us- preferably at the end of the day or email office and I will call you
- Biscuits- Please provide plain, nut free varieties
- Tissues- Please provide 1 box per child to get us through the year
- Afternoon Collection- If your child is being collected by someone else or going home with a friend- you must notify me or the office as I am not allowed to release them without permission.

Any questions?

